

GLOBAL MARKETING

靠诚信广交朋友，用真情扩宽视野，为和谐实现双赢。

Using integrity to make friends, using real feelings to broaden business and realizing win-win for harmonization.



新乡新利德机械制造有限公司

Xinxiang New Leader Machinery Manufacturing Co., Ltd

用心制造·持续改进

Attentively manufacturing, keeping on improving and elaborately serving to make our customers satisfied



新乡市新利德机械制造有限公司

Xinxiang New Leader Machinery Manufacturing Co., Ltd

Address: Yulin, Yanjin, Xinxiang, Henan

E-mail: sale@newld-transfercar.com / sale@transfercart-newld.com

Website: www.transfercart-newld.com / www.newld-transfercar.com

Tel: +86-373-5289557 Skype: anny Zhang456

Whatsapp/Mobile: +8615893855982/86 13569859270





企业简介

新乡市新利德机械制造有限公司是一家集开发、设计、生产、销售为一体的专业化电动平车生产公司；公司拥有一支现代化的管理团队，凭借先进的管理方法和服务理念，依靠当地政府的人才、环境支持优势，已经成为电动平车行业的名牌企业。

公司成立于2016年9月，占地四十余亩，年产500台电动平车，可生产1-300吨区间各种吨位KPD低压轨道型、KPJ电缆卷筒型、KPC安全滑触线型、KPX蓄电池型、KPT拖电缆型、KP无动力型等六大系列包括转弯电动平车、无轨道电动平车、钢包车、喷漆房电动平车、喷砂房电动平车、摆渡电动平车、液压升降电动平车；循环电动平车、矿用平板车、起重小车、台车及起重配件、抱轴式减速机、防爆电机等八十多个产品。强大的设计团队可以承接各种非标、常规的平板车设计。

产品符合JB/T6127-92机械行业标准，具有结构紧凑、外形美观、定位准确、操作简单、转弯行驶平稳、爬坡能力强、行驶距离远、噪音低、易维护、无线遥控的优点，适合于各种环境的运输，广泛应用于冶金、煤炭、机电、重工、造船、轻工业等企业。目前我公司生产电动平车销售到国内各个城市，并且现已出口到德国、泰国、荷兰、南非、叙利亚、土耳其、尼泊尔等二十多个国家。

公司拥有员工60名，其中高级工程师3人，工程师6名，技术员6名，常年与南京工程学院合作，有资深经验的焊接技师亲自指导生产；公司通过ISO9001质量体系及SGS认证，并先后获得了“全国名优品牌”、“河南省优秀产品”、“质量诚信消费者信得过单位”、“重合同守信用企业”、“AAA级质量诚信会员”等称号。

COMPANY INTRODUCTION

Xinxiang New Leader machinery manufacturing Co., Ltd is a collection of research, design, manufacture, installation and after-sales service as one of the professional transfer trolley manufacturing company. Our company has a modernized management team and has become the famous enterprise in the motorized transfer trolley business, depending on the advanced management methods and service concept, with the help of the local government's talent and environment support.

Our company was established in 2016, which covering more than 40 acres, with an annual output of 800 sets transfer cart. We can produce 1-300 ton range of various tonnage of: KPD rail low voltage series, KPJ cable reel series, KPC safety sliding line series, KPX battery powered series, BWP rubber wheel trackless transfer cart series, KPT towed cable series, KP non-power type seven series which including turning electric flat car, trackless electric flat car, ladle car, spray paint room electric flat car, sandblasting room electric flat car, ferry electric flat car, hydraulic lifting electric flat car; circulating electric flat car, mine used transfer cart, crane transfer trolley, trolley and crane accessories, supporting shaft reducer, explosion-proof motor, and so on more than 80 products.

A strong design team can undertake variety kind of non-standard, conventional transfer cart design. Products meet the JB / T6127-92 mechanical industry standards, with compact structure, beautiful appearance, accurate positioning, simple operation, turning smooth, strong climbing ability, long travelling distance, low noise, easy maintenance, no cable remote control advantages. These rail transfer carts are suitable for transportation in various environments and are widely used in these fields of metallurgy, coal, electronics, heavy industry, shipbuilding and light industry. Our products have been sold to every city in China and exported to almost 20 countries, such as Germany, Turkey, South Africa, Thailand and so on.

The company has 60 employees, including three senior engineers, 6 engineers and 6 technicians. We cooperate with the Nanjing engineering institute all the year round, and a senior experience in the welding technician personally guide the production. We passed ISO9001 Quality management system requirement and won the honor of 'National famous brand', 'Quality Products of Henan province', 'Quality and Credit Enterprise Consumer Trusted', 'The Contract Trustworthy Enterprise', 'Quality and Integrity Member of Grade AAA'.

企业荣誉 ENTERPRISE HONOR

用心打造，可根据您的需求“**从新定制**”
用我们的专业提供“**一对一**”优质服务。

想要什么样的产品，来电告诉我们，我们帮您设计，生产，
加工、为您提供更人性化的服务，更高品质的产品，
让您享受最优性价比。

Created by our heart, you can customize it according
to your needs. Use our expertise to provide "one to one"
quality service.

What kind of products you want, please tell us, we help you
design and produce, processing, providing you with more with
more personalized service, higher quality products, Let you
enjoy the optimal cost performance.



KPDZ 低压轨道供电系列电动平车

Brief introduction for KPDZ series' railway flat carts powered by low voltage electricity from the railways.

“新利德” KPDZ系列是低压轨道供电轨道平车，是将交流380V的电源通过变压器降至交流36V三相，分别接至三根轨道上（增加一条导电轨），轨道平车上的车轮和滑块将三根导电轨上的交流36V电源引入车载电器箱，经过升压变压器将三相交流36V升压至三相交流380V，再通过交流控制系统控制交流交流冶金电机，使平车启动、停止、前进、后退等。

该系列电动平车能够在S型轨道、弧形轨道及高温场合使用；平车可以加装液压升降、起重系统；平车具有较高的安全性和机动灵活性；对轨道铺设要求较高（需要绝缘处理轨道），适用于载重量较大（>50t），使用频率较高、中长距离运输场合。不受距离的限制，但运行距离超过70米，需要增加变压器数量来弥补轨道压降。

KPDZ series railway flat carts are powered by the low voltage electricity from the railways. The power source AC 380v is transformed into AC 36v two-phase and are respectively connected to the two rails. Then the flat car's wheels conduct the AC 36v on rail into the electrical appliance box at the bottom of the carts. And then the AC 36v is transformed into DC 36v and then control the DC motor through the DC control system to make the flat carts start, stop, go forward and backward and adjust the speed and so on.

KPDZ flat carts can be used both on the 'S' and arc-shaped railways. The also can be used in the high-temperature environment. The hydraulic lifting device can be installed on the flat carts. But this series have strict requirement on the construction of the railways which need to be insulated. The rated load can not be more than 50T. This series' flat cart are suitable to be used in such condition: higher using frequency, middle and long distance transportation. The running distance is not limited, but with a running distance of more than 70 meters, you need to increase the number of transformers to compensate for the track voltage drop.



KPDZ 技术参数表

| 台面尺寸 Table size (mm) | KPDZ-2t | KPDZ-5t | KPDZ-10t | KPDZ-16t | KPDZ-20t | KPDZ-25t | KPDZ-30t | KPDZ-40t | KPDZ-50t | KPDZ-63t |
|-----------------------------------|-------------|---------|----------|----------|----------|----------|----------|----------|----------|----------|
| 额定载重量 Rated load (t) | 2 | 5 | 10 | 16 | 20 | 25 | 30 | 40 | 50 | 63 |
| 台面尺寸 Table size (mm) | 长Length (L) | 2000 | 3500 | 3600 | 4000 | 4000 | 4500 | 4500 | 5000 | 5600 |
| | 宽Width (W) | 1500 | 2000 | 2000 | 2000 | 2200 | 2200 | 2500 | 2500 | 2500 |
| | 高Height (H) | 450 | 450 | 500 | 500 | 550 | 600 | 600 | 650 | 750 |
| 轮距 Wheel Base (mm) | 1200 | 2500 | 2600 | 2800 | 2800 | 3200 | 3200 | 3800 | 4200 | 4300 |
| 轨内侧距 Rail inner Gauge (mm) | 1200 | 1435 | 1435 | 1435 | 1435 | 1435 | 1435 | 1435 | 1435 | 1435 |
| 车轮直径 Wheel Base (mm) | φ270 | φ300 | φ300 | φ350 | φ350 | φ400 | φ400 | φ500 | φ500 | φ600 |
| 车轮数量 Wheel Quantity (个) | 4 | 4 | 4 | 4 | 4 | 4 | 4 | 4 | 4 | 4 |
| 离地间隙 Ground Clearance (mm) | 50 | 50 | 50 | 50 | 50 | 50 | 50 | 50 | 50 | 75 |
| 运行速度 Running Speed (mm) | 0-25 | 0-25 | 0-25 | 0-20 | 0-20 | 0-20 | 0-20 | 0-20 | 0-20 | 0-20 |
| 电机功率 Motor Power (Kw) | 1 | 1.2 | 1.6 | 2 | 2.2 | 3 | 3.5 | 4 | 5 | 6.3 |
| 变压器功率 Transformer Power(KVA) | 3 | 5 | 5 | 6.8 | 6.8 | 6.8 | 10 | 10 | 10 | 20 |
| 变压器数量 Transformer Quantity (个) | 1 | 1 | 1 | 1 | 1 | 1 | 1 | 1 | 1 | 1 |
| 运行时间 Running Distance (m) | 80 | 80 | 80 | 80 | 80 | 80 | 80 | 60 | 50 | 50 |
| 最大轮压 Max Wheel Load (KN) | 14.4 | 25.8 | 42.6 | 64.5 | 77.7 | 94.5 | 110.4 | 142.8 | 174 | 221.4 |
| 参考重量 Reference Weight (t) | 2.8 | 3.6 | 4.2 | 5.5 | 5.9 | 6.5 | 6.8 | 7.6 | 8 | 10.8 |
| 荐用道轨型号 Recommended Rail Model | P15 | P18 | P18 | P24 | P24 | P38 | P38 | P43 | P43 | P50 |

说明：1.载重量、台面尺寸、轨内侧距可以根据客户需求设计、制造；2.可选配无线遥控装置（进口或国产）；3.可选配遇人自动停止、极限限位装置；4.可选配轨道自动断电功能；5.可选配直流有刷电机、直流无刷电机；6.可选配国产电器、进口电器；7.可选配耐高温场合要求。
Notes: 1. Load capacity, table size and gauge can be customized. 2. Options: a. Remote radio control (imported or made in China); b. Automatic stop when detecting obstacle or person, limit switches (to limit travel); c. Automatic cutting off power on rail; d. motor (DC motor with brush and DC motor brushless); e. Electrical parts (imported or made in China); f. Can be designed to meet special working environment such as high temperature.



KPDS技术参数表

| 平车型号 Model | KPDS-2t | KPDS-5t | KPDS-10t | KPDS-16t | KPDS-20t | KPDS-25t | KPDS-30t | KPDS-40t | KPDS-50t | KPDS-63t | KPDS-80 | KPDS-100 | KPDS-150 |
|-----------------------------------|-------------|---------|----------|----------|----------|----------|----------|----------|----------|----------|---------|----------|----------|
| 额定载重量 Rated load (t) | 2 | 5 | 10 | 16 | 20 | 25 | 30 | 40 | 50 | 63 | 80 | 100 | 150 |
| 台面尺寸 Table size (mm) | 长Length (L) | 2000 | 3500 | 3600 | 4000 | 4000 | 4500 | 4500 | 5000 | 5500 | 6000 | 6500 | 10000 |
| | 宽Width (W) | 1500 | 2000 | 2000 | 2000 | 2200 | 2200 | 2500 | 2500 | 2500 | 2600 | 2800 | 3000 |
| | 高Height (H) | 450 | 450 | 500 | 500 | 550 | 600 | 600 | 650 | 650 | 750 | 800 | 1200 |
| 轮距 Wheel Base (mm) | 1200 | 2500 | 2600 | 2800 | 2800 | 3200 | 3200 | 3800 | 4200 | 4300 | 4700 | 4900 | 7000 |
| 轨内侧距 Roll inner Gauge (mm) | 1200 | 1435 | 1435 | 1435 | 1435 | 1435 | 1435 | 1435 | 1435 | 1435 | 1800 | 2000 | 2000 |
| 车轮直径 Wheel Base (mm) | Φ270 | Φ300 | Φ300 | Φ350 | Φ350 | Φ400 | Φ400 | Φ500 | Φ500 | Φ600 | Φ600 | Φ600 | Φ600 |
| 车轮数量 Wheel Quantity (个) | 4 | 4 | 4 | 4 | 4 | 4 | 4 | 4 | 4 | 4 | 4 | 4 | 8 |
| 离地间隙 Ground Clearance (mm) | 50 | 50 | 50 | 50 | 50 | 50 | 50 | 50 | 50 | 75 | 75 | 75 | 75 |
| 运行速度 Running Speed (mm) | 25 | 25 | 25 | 20 | 20 | 20 | 20 | 20 | 20 | 20 | 20 | 20 | 18 |
| 电机功率 Motor Power (kw) | 0.8 | 1.5 | 1.5 | 2.2 | 2.5 | 3 | 4 | 5.5 | 5.5 | 7.5 | 7.5 | 11 | 15 |
| 变压器功率 Transformer Power(kVA) | 3 | 5 | 5 | 6.8 | 6.8 | 6.8 | 10 | 10 | 10 | 20 | 20 | 30 | 30 |
| 变压器数量 Transformer Quantity (个) | 1 | 1 | 1 | 1 | 1 | 1 | 1 | 1 | 1 | 1 | 1 | 1 | 1 |
| 运行时间 Running Distance (m) | 80 | 80 | 80 | 80 | 80 | 80 | 80 | 60 | 50 | 50 | 50 | 50 | 50 |
| 最大轴压 MaxWheelLoad (kN) | 14.4 | 25.8 | 42.6 | 64.5 | 77.7 | 94.5 | 110.4 | 142.8 | 174 | 221.4 | 278.4 | 343.8 | 265.2 |
| 参考重量 Reference Weight (t) | 2.8 | 3.6 | 4.2 | 5.5 | 5.9 | 6.5 | 6.8 | 7.6 | 8 | 10.8 | 12.8 | 14.5 | 26.8 |
| 推荐轨道型号 Recommended Rail Model | P15 | P18 | P18 | P24 | P24 | P38 | P38 | P43 | P43 | P50 | P50 | QU100 | QU100 |

说明: 1.载重量、台面尺寸、轨内侧距可以根据客户需求设计、制造; 2.可选配无线遥控装置(进口或国产); 3.可以选配遇人自动停止、极限定位装置; 4.可选配轨道自动断电功能; 5.可选变频器无极调速功能; 6.可选配国产电器、进口电器; 7.可选配耐高温场合要求。

Notes: 1.Load capacity,table size and rail inner gauge can be customized. 2.Optional device:a.Remote radio control(imported or made in China);b. Automatic stop when detecting obstacle or person, limit switches(to limit travel);c. Automatic cutting off power on rail;5. Variable speed device(VFD);6. Electrical parts can be optional(made in China or imported);7.Can be designed to meet special working environment such as high temperature.

KPDS 低压轨道供电系列电动平车

Brief introduction for KPDS series' railway flat carts powered by low voltage electricity from the railways.

“新利德” KPDS系列是低压轨道供电轨道平车,是将交流380V的电源通过变压器降至交流36V三相,分别接至三根轨道上(增加一条导电轨),轨道平车上的车轮和滑块将三根导电轨上的交流36V电源引入车载电器箱,经过升压变压器将三相交流36V升压至三相交流380V,再通过交流控制系统控制交流交流冶金电机,使平车启动、停止、前进、后退等。

该系列电动平车能够在S型轨道、弧形轨道及高温场合使用;平车可以加装液压升降、起重系统;平车具有较高的安全性和机动灵活性;对轨道铺设要求较高(需要绝缘处理轨道),适用于载重量较大(>50t),使用频率较高、中长距离运输场合。不受距离的限制,但运行距离超过70米,需要增加变压器数量来弥补轨道压降。

KPDS series' railway flat cart are powered by the low voltage electricity from the railways.source AC 380V is transformed to AC36V three-phase through transformer. Then they are connected to the three rails respectively (add a conducting rail). The flat cart' s wheels and conducting plate lead the AC 36V electricity to the electrical appliance box which is installed on the carts. And AC 36V is transformed to AC 380V through the transformer. Then controls AC Metallurgy motor through AC control system to make the transfer cart start,stop,go forward and backward and so on.

This series' transfer cart can be used both on 'S' and arc-shaped rails, and high temperature. There can be attached with hydraulic elevator system and lifting system. The cart has the advantages of safety and flexibility. But this series have strict requirement on the construction of the railways which need to be insulated. This series' transfer carts are suitable for the environment of heavy load capacity (>50t), middle and long distance transportation. The running distance is not limited, but when the running distance exceeds 70m, you need to increase the number of transformers to compensate for the track voltage drop.



KPX 蓄电池供电系列电动平车

Brief introduction for KPX series' flat cart powered by battery

“新利德”KPX系列蓄电池供电轨道平车，是由蓄电池提供电源的轨道平车，蓄电池安装在平车的内部，电源通过电气控制系统，给直流牵引电机提供电力；使平车启动、停止、前进、后退、调速等。

该系列平车能够在S型轨道、弧形轨道及易燃易爆、摆渡场合使用；平车可以加装液压升降系统；平车直流电机有启动平稳、启动力矩大、对减速机冲击小、电压低、使用寿命长等优点；相对于KPJ、KPD系列平车，具有安全性和机动性；其运行距离不受限制，对轨道铺设要求也不高，适用于使用频率不高、长距离运输场合。但蓄电池需要定期维护，蓄电池寿命一般为2.5年左右，并且使用时间受限。



KPX series flat carts are battery powered. The batteries are installed in the carts. The batteries supply electricity to the DC motor through the electrical control system. We use this principle to operate the carts, for example, start, stop, go forward and backward, adjust the speed and so on. KPX flat carts can be used both on the 'S' and arc-shaped railways. They also can be used in the ferry condition and flammable, explosive environment. The hydraulic lifting device can be installed on the flat carts. The DC motor has the advantages of stable start, big starting power, small impact to the gear reducer, low voltage, long lifetime and so on. Compared with the KPJ and KPD flat carts, the KPX series are more safe and flexible. The running distance is not limited. It has no strict requirement for the construction of the railway. KPX series are suitable to be used in the long distance transportation and low using frequency. The batteries need maintenance once a regular time. The lifetime of the batteries is about 2.5 years. The using time after once charge is limited.



现场展示 SPOT DEMONSTRATION



KPX 技术参数表

| 台面尺寸 Table size (mm) | KPX-2t | KPX-5t | KPX-10t | KPX-16t | KPX-20t | KPX-25t | KPX-30t | KPX-40t | KPX-50t | KPX-63t | KPX-80t | KPX-100t | KPX-150t |
|--|-------------|--------|---------|---------|---------|---------|---------|---------|---------|---------|---------|----------|----------|
| 额定载重量 Rated load (t) | 2 | 5 | 10 | 16 | 20 | 25 | 30 | 40 | 50 | 63 | 80 | 100 | 150 |
| 台面尺寸 Table size (mm) | 长Length (L) | 2000 | 3500 | 3600 | 4000 | 4000 | 4500 | 4500 | 5000 | 5500 | 5600 | 6000 | 10000 |
| | 宽Width (W) | 1500 | 2000 | 2000 | 2000 | 2200 | 2200 | 2200 | 2500 | 2500 | 2500 | 2800 | 3000 |
| | 高Height (H) | 450 | 500 | 500 | 550 | 550 | 600 | 600 | 650 | 650 | 700 | 800 | 1200 |
| 轮距 Wheel Base (mm) | 1200 | 2500 | 2600 | 2800 | 2800 | 3200 | 3200 | 3800 | 4200 | 4300 | 4700 | 4900 | 7000 |
| 轨内侧距 Rail Inner Gauge (mm) | 1200 | 1435 | 1435 | 1435 | 1435 | 1435 | 1435 | 1435 | 1435 | 1435 | 1800 | 2000 | 2000 |
| 车轮直径 Wheel Base (mm) | φ280 | φ300 | φ300 | φ350 | φ350 | φ400 | φ400 | φ500 | φ500 | φ600 | φ600 | φ600 | φ600 |
| 车轮数量 Wheel Quantity (个) | 4 | 4 | 4 | 4 | 4 | 4 | 4 | 4 | 4 | 4 | 4 | 4 | 8 |
| 车轮直径 Wheel Base (mm) | 50 | 50 | 50 | 50 | 50 | 50 | 50 | 50 | 50 | 75 | 75 | 75 | 75 |
| 离地间隙 Ground Clearance (mm) | 0-25 | 0-25 | 0-25 | 0-20 | 0-20 | 0-20 | 0-20 | 0-20 | 0-20 | 0-20 | 0-20 | 0-20 | 0-18 |
| 运行速度 Running Speed (mm) | 1 | 1.2 | 1.6 | 2 | 2.2 | 3 | 3.5 | 4 | 5 | 6.3 | 8 | 10 | 15 |
| 电机功率 Motor Power (Kw) | 180 | 180 | 160 | 180 | 180 | 250 | 250 | 300 | 330 | 400 | 400 | 440 | 600 |
| 蓄电池容量 Battery Capacity(Ah) | 24 | 36 | 48 | 48 | 48 | 48 | 48 | 48 | 48 | 48 | 72 | 72 | 72 |
| 蓄电池电压 Battery Voltage (V) | 4.32 | 5.4 | 4.8 | 4.3 | 4 | 4 | 3.5 | 3.6 | 3.3 | 3 | 3.6 | 3.2 | 2.9 |
| 满载连续运行时间 Running Time When Full Load | 6.5 | 8.1 | 7.2 | 5.1 | 4.8 | 4.8 | 4.2 | 4.3 | 4 | 3.6 | 4.3 | 3.8 | 3.2 |
| 续航里程 Running Distance for One Charge (km) | 14.4 | 25.8 | 42.6 | 64.5 | 77.7 | 94.5 | 110.4 | 142.8 | 174 | 221.4 | 278.4 | 343.8 | 265.2 |
| 参考重量 Reference Weight (t) | 2.8 | 3.6 | 4.2 | 5.5 | 5.9 | 6.5 | 6.8 | 7.6 | 8 | 10.8 | 12.8 | 14.5 | 26.8 |
| 推荐轨道型号 Recommended Rail Model | P15 | P18 | P18 | P24 | P24 | P38 | P38 | P43 | P43 | P50 | P50 | QU100 | QU100 |

说明: 1.载重量、台面尺寸、轨内侧距可以根据客户需求设计、制造; 2.可选配无线遥控装置(进口或国产); 3.可选配遇人自动停止、极限限位装置; 4.可选配免维护蓄电池、锂电池、防爆蓄电池、耐高温蓄电池等; 5.可选配直流有刷电机、直流无刷电机; 6.可选配国产电器、进口电器。

Notes: 1. Load capacity, table size and gauge can be customized. 2. Options: a. Remote radio control (imported or made in China); b. Automatic stop when detecting obstacle or person, limit switches (to limit travel); c. Battery type (Free of maintenance Battery, explosion-proof battery, and anti-high temperature battery); d. motor with brush and DC motor brushless; e. Electrical parts (imported or made in China)

KPJ 技术参数表

| 台面尺寸 Table size (mm) | | KPJ-2t | KPJ-5t | KPJ-10t | KPJ-16t | KPJ-20t | KPJ-25t | KPJ-30t | KPJ-40t | KPJ-50t | KPJ-63t | KPJ-80 | KPJ-100 | KPJ-150 |
|----------------------------------|-------------|--------|--------|---------|---------|---------|---------|---------|---------|---------|---------|--------|---------|---------|
| 额定载重量 Rated load (t) | | 2 | 5 | 10 | 16 | 20 | 25 | 30 | 40 | 50 | 63 | 80 | 100 | 150 |
| 台面尺寸 Table size (mm) | 长Length (L) | 2000 | 3500 | 3600 | 4000 | 4000 | 4500 | 4500 | 5000 | 5500 | 5600 | 6000 | 6500 | 10000 |
| | 宽Width (W) | 1500 | 2000 | 2000 | 2000 | 2200 | 2200 | 2200 | 2500 | 2500 | 2500 | 2600 | 2800 | 3000 |
| | 高Height (H) | 450 | 450 | 500 | 500 | 550 | 600 | 600 | 650 | 650 | 750 | 800 | 850 | 1200 |
| 轮距 Wheel Base (mm) | | 1200 | 2500 | 2600 | 2800 | 2800 | 3200 | 3200 | 3800 | 4200 | 4300 | 4700 | 4900 | 7000 |
| 轨内侧距 Rail Inner Gauge (mm) | | 1200 | 1435 | 1435 | 1435 | 1435 | 1435 | 1435 | 1435 | 1435 | 1435 | 1800 | 2000 | 2000 |
| 车轮直径 Wheel Base (mm) | | Φ270 | Φ300 | Φ300 | Φ350 | Φ350 | Φ400 | Φ400 | Φ500 | Φ500 | Φ600 | Φ600 | Φ600重 | Φ600 |
| 车轮数量 Wheel Quantity (个) | | 4 | 4 | 4 | 4 | 4 | 4 | 4 | 4 | 4 | 4 | 4 | 4 | 8 |
| 离地间隙 Ground Clearance (mm) | | 50 | 50 | 50 | 50 | 50 | 50 | 50 | 50 | 50 | 75 | 75 | 75 | 75 |
| 电机功率 Motor Power (kw) | | 25 | 25 | 25 | 25 | 30 | 30 | 50 | 50 | 50 | 50 | 50 | 50 | 50 |
| 运行长度 Running Speed (m) | | 0.8 | 1.5 | 1.5 | 2.2 | 2.5 | 3 | 4 | 5.5 | 5.5 | 7.5 | 7.5 | 11 | 15 |
| 最大轮压 Max Wheel Load (kN) | | 25 | 25 | 25 | 25 | 30 | 30 | 50 | 50 | 50 | 50 | 50 | 50 | 50 |
| 参考重量 Reference Weight (t) | | 14.4 | 25.8 | 42.6 | 64.5 | 77.7 | 94.5 | 110.4 | 142.8 | 174 | 223.4 | 278.4 | 343.8 | 265.2 |
| 荐用道轨型号 Recommended Rail Model | | 2.5 | 3.5 | 4 | 5.2 | 5.6 | 6.2 | 6.5 | 7.3 | 7.8 | 10.5 | 12.3 | 14.1 | 26.2 |
| | | P15 | P18 | P18 | P24 | P24 | P38 | P38 | P43 | P43 | P50 | P50 | QU100 | QU100 |

说明: 1.载重量、台面尺寸、轨内侧距可以根据客户需求设计、制造; 2.可选配弹簧式、磁力耦合式(可带排线器)、增转电机式电缆卷筒; 3.可选配遇人自动停止、极限定位装置; 4.可选配随车手柄随车操作、固定点操作、无线遥控等; 5.可选配进口电器、国产电器; 6.可选配中间供电、两端点供电; 7.可选配变频器无极调速; 8.可选配耐高温场合要求。

Notes: 1. Load capacity, table size and rail inner gauge can be customized. 2. Optional device: a. Cable reel (Spring type, magnetic coupling type, motor-driven type); b. Automatic stop when detecting obstacle or person, limit switches (to limit travel); c. Operation way (hand held control pendant, remote radio control or operation platform with the cart); d. Electrical parts (imported or made in china); e. power supply position (middle or two ends); f. Variable speed device (VFD); g. Can be designed to meet special working environment such as high temperature.



“新利德”KPJ系列是卷筒供电轨道平车，是将交流380V电缆线依靠平车上卷线装置的收放电缆实现平车供电，卷线装置放置在轨道平车的下方，直接将电源通过交流控制系统控制电机的启动、停止、前进、后退等。操作系统为低压36V电源控制；平车上可以加装液压升降系统。

该系列平车适用于恶劣环境、高温环境、防爆环境等场合；由于机构比较简单，成本较低，是车间过跨较常见的轨道平车；相对于KPX系列平车，不受使用时间的限制，相对于KPD系列电动平车，对于轨道铺设要求不高；该平车适用于任意载重量、使用频率较高的场合；对于运行距离超过50米，需要增加排线器来辅助卷线。最大运行距离可以满足200米。

KPJ series railways flat carts are powered by the cable reels. The flat carts get power AC 380V through the device of cable reel which is installed at the bottom of the cart. The motor is controlled by the power through the AC control system. We use this principle to operate the cart for example, start, stop, go forward, backward and so on.

The operation system is low voltage 36V. The hydraulic lifting device can be installed on the flat carts. This series flat carts are suitable to be used in the bad environment, for example, high-temperature and anti-explosion condition. With its simple structure and low price, this series are more often used to transfer materials from one workshop to another. Compared with the KPX series, the using time is not limited; compared with the KPD series, it has no strict requirement for the construction of the railway. The load capacity is not limited and can be used frequently. If the running distance is more than 50m, a cable arranger needs to be installed to arrange the cables. The running distance of KPJ series can reach to 200m.



KPJ 电缆卷筒供电系列电动平车

Brief introduction for KPJ series' railways flat carts powered by cable reels.



“新利德”KPT系列是拖电缆供电轨道平车，是将交流380V电缆直接引入平车电气控制系统，来控制平车的启动、停止、前进、后退等。通过平车的移动来拖动放置在地面上的电缆实现平车供电，电缆线放置在两轨道中心，操作系统为低压36V电源控制；平车上可以加装液压升降系统。

该系列平车适用于恶劣环境、高温环境、防爆环境等场合；由于机构比较简单，成本较低，是车间短距离过跨较常见的轨道平车；相对于KPX系列平车不受使用时间限制，相对于KPD系列平车，对于轨道铺设要求不高；相对于KPJ系列平车，成本更低；该平车适用于距离不长（≤20m）、使用频率较高、整车高度较低的场合；对于运行距离较短运行速度较慢的场合可以使用拖链来减少电缆磨损。

KPT series' rail transfer carts are powered by the mobile cable. It conducts AC 380V directly into the electrical control system of the transfer cart to let it start, stop, go forward, backward and so on. The cart is powered by dragging cable which is laid on the ground. The cable line is placed between the two rails. The operation system is low voltage 36V power. The hydraulic lifting device can be installed on the flat carts.

This series' flat carts are suitable to be used in the bad environment, for example, high-temperature and anti-explosion condition. With its simple structure and low price, this series is more often used to transfer materials for a short distance from one workshop to another. Compare with KPX series transfer cart, the using time is not limited. Compare with KPD series transfer cart, it has no strict requirement on the rail' s installation. Compare with KPJ series cart, the cost is low. This series' transfer cart is suitable for the environment of short running distance (≤20m), high using frequency, and low cart' s height. For the condition of short running distance and low speed, the chain can be used to reduce the abrasion of the cable.



KPT 拖缆供电系列电动平车

Brief introduction for KPT series' railways flat carts powered by mobile cable .

KPT 技术参数表

| 台面尺寸 Table size (mm) | KPT-2t | KPT-5t | KPT-10t | KPT-16t | KPT-20t | KPT-25t | KPT-30t | KPT-40t | KPT-50t | KPT-63t | KPT-80 | KPT-100 | KPT-150 |
|----------------------------------|-------------|--------|---------|---------|---------|---------|---------|---------|---------|---------|--------|---------|---------|
| 额定载重量 Rated load (t) | 2 | 5 | 10 | 16 | 20 | 25 | 30 | 40 | 50 | 63 | 80 | 100 | 150 |
| 台面尺寸 Table size (mm) | 长Length (L) | 2000 | 3500 | 3600 | 4000 | 4000 | 4500 | 4500 | 5000 | 5500 | 5600 | 6000 | 10000 |
| | 宽Width (W) | 1500 | 2000 | 2000 | 2000 | 2200 | 2200 | 2200 | 2500 | 2500 | 2500 | 2800 | 3000 |
| | 高Height (H) | 450 | 450 | 500 | 500 | 550 | 600 | 600 | 650 | 650 | 750 | 800 | 1200 |
| 轮距 Wheel Base (mm) | 1200 | 2500 | 2600 | 2800 | 2800 | 3200 | 3200 | 3800 | 4200 | 4300 | 4700 | 4900 | 7000 |
| 轨内侧距 Rail Inner Gauge (mm) | 1200 | 1435 | 1435 | 1435 | 1435 | 1435 | 1435 | 1435 | 1435 | 1435 | 1800 | 2000 | 2000 |
| 车轮直径 Wheel Base (mm) | Φ270 | Φ300 | Φ300 | Φ350 | Φ350 | Φ400 | Φ400 | Φ500 | Φ500 | Φ600 | Φ600 | Φ600 | Φ600 |
| 车轮数量 Wheel Quantity (个) | 4 | 4 | 4 | 4 | 4 | 4 | 4 | 4 | 4 | 4 | 4 | 4 | 8 |
| 离地间隙 Ground Clearance (mm) | 50 | 50 | 50 | 50 | 50 | 50 | 50 | 50 | 50 | 75 | 75 | 75 | 75 |
| 运行速度 Running Speed (mm) | 25 | 25 | 25 | 20 | 20 | 20 | 20 | 20 | 20 | 20 | 20 | 20 | 18 |
| 电机功率 Motor Power (Kw) | 0.8 | 1.5 | 1.5 | 2.2 | 2.5 | 3 | 4 | 5.5 | 5.5 | 7.5 | 7.5 | 11 | 15 |
| 最大轮压 Max Wheel Load (K0) | 14.4 | 25.8 | 42.6 | 64.5 | 77.7 | 94.5 | 110.4 | 142.8 | 174 | 221.4 | 278.4 | 343.8 | 265.2 |
| 参考重量 Reference Weight (t) | 2.3 | 3.3 | 3.8 | 5 | 5.5 | 6 | 6.3 | 7.2 | 7.6 | 10.3 | 12.1 | 13.9 | 26 |
| 荐用道轨型号 Recommended Rail Model | P15 | P18 | P18 | P24 | P24 | P38 | P38 | P43 | P43 | P50 | P50 | QU100 | QU100 |

说明：1.载重量、台面尺寸、轨内侧距可以根据客户需求设计、制造；2.可选配拖链保护电缆线、电缆线悬挂等方式；3.可以选配遇人自动停止、极限定位装置；4.可选配随车手柄随行操作、固定点操作、无限遥控等；5.可选配进口电器、国产电器；6.可选配变频器无极调速；7.可选配防爆、耐高温等要求。

Notes: 1.Load capacity, table size and rail inner gauge can be customized. 2.Optional device: a. Cable reel (cable within chain or cable hanging); b. Automatic stop when detecting obstacle or person, limit switches (to limit travel); c. Operation way (hand held control pendant, remote radio control or operation platform with the cart); d. Electrical parts (imported or made in china); e. Variable speed device (VFD); f. Can be designed to meet special working environment such as high temperature, explosion proof and so on.

KPC 滑触线供电系列电动平车

Brief introduction for KPC serie's rail transfer trolley powered by safety sliding line .



KPC 技术参数表

| 台面尺寸 Table size (mm) | | KPC-2t | KPC-5t | KPC-10t | KPC-16t | KPC-20t | KPC-25t | KPC-30t | KPC-40t | KPC-50t | KPC-63t | KPC-80 | KPC-100 | KPC-150 |
|----------------------------------|-------------|--------|--------|---------|---------|---------|---------|---------|---------|---------|---------|--------|---------|---------|
| 额定载重量 Rated load (t) | | 2 | 5 | 10 | 16 | 20 | 25 | 30 | 40 | 50 | 63 | 80 | 100 | 150 |
| 台面尺寸 Table size (mm) | 长Length (L) | 2000 | 3500 | 3600 | 4000 | 4000 | 4500 | 4500 | 5000 | 5500 | 5600 | 6000 | 6500 | 10000 |
| | 宽Width (W) | 1500 | 2000 | 2000 | 2000 | 2200 | 2200 | 2200 | 2500 | 2500 | 2500 | 2600 | 2800 | 3000 |
| | 高Height (H) | 450 | 450 | 500 | 500 | 550 | 600 | 600 | 650 | 650 | 750 | 800 | 850 | 1200 |
| 轮距 Wheel Base (mm) | | 1200 | 2500 | 2600 | 2800 | 2800 | 3200 | 3200 | 3800 | 4200 | 4300 | 4700 | 4900 | 7000 |
| 轨内侧距 Rail inner Gauge (mm) | | 1200 | 1435 | 1435 | 1435 | 1435 | 1435 | 1435 | 1435 | 1435 | 1435 | 1800 | 2000 | 2000 |
| 车轮直径 Wheel Base (mm) | | Φ270 | Φ300 | Φ300 | Φ350 | Φ350 | Φ400 | Φ400 | Φ500 | Φ500 | Φ600 | Φ600 | Φ600 | Φ600 |
| 车轮数量 Wheel Quantity (个) | | 4 | 4 | 4 | 4 | 4 | 4 | 4 | 4 | 4 | 4 | 4 | 4 | 8 |
| 离地间隙 Ground Clearance (mm) | | 50 | 50 | 50 | 50 | 50 | 50 | 50 | 50 | 50 | 75 | 75 | 75 | 75 |
| 运行速度 Running Speed (mm) | | 25 | 25 | 25 | 20 | 20 | 20 | 20 | 20 | 20 | 20 | 20 | 20 | 18 |
| 电机功率 Motor Power (Kw) | | 0.8 | 1.5 | 1.5 | 2.2 | 2.5 | 3 | 4 | 5.5 | 5.5 | 7.5 | 7.5 | 11 | 15 |
| 最大轮压 Max Wheel Load (9N) | | 14.4 | 25.8 | 42.6 | 64.5 | 77.7 | 94.5 | 110.4 | 142.8 | 174 | 221.4 | 278.4 | 343.8 | 265.2 |
| 参考重量 Reference Weight (t) | | 2.3 | 3.3 | 3.8 | 5 | 5.5 | 6 | 6.3 | 7.2 | 7.6 | 10.3 | 12.1 | 13.9 | 26 |
| 荐用道轨型号 Recommended Rail Model | | P15 | P18 | P18 | P24 | P24 | P38 | P38 | P43 | P43 | P50 | P50 | QU100 | QU100 |

说明: 1.载重量、台面尺寸、轨内侧距可以根据客户需求设计、制造; 2.可选配有接缝安全换出现、无缝安全滑触线; 3.可选配遇人自动停止、极限限位装置; 4.可选配随车随行操作、固定点操作、无线遥控灯; 5.可选配进口电器; 6.可选配地沟自动撤板工供电、地上供电灯; 7.可选配变频器无极调速; 8.可选配耐高温场合要求。

Notes: 1.Load capacity,table size and rail inner gauge can be customized. 2.Options: slide line with seam or seamless slid line); b automatic stop when detecting obstacle or person,limit switches(to limit travel);c.Operation way(hand held control pendant,remote radio control or operation platform with the cart;d.Electrical parts (imported or made in China);e.Elid line installation(in the trench on the ground ,on the wall and on the ceiling);f.Variable speed device(VFD);g.Can be designed to meet special working environment such sas heightemperature.



“新利德” KPC系列是滑触线供电轨道平车，是将交流380V的安全滑触线直接引入平车交流控制系统，来控制平车的启动、停止、前进、后退等。通过平车的移动带动安全滑触线的滑块来实现给平车供电，安全滑触线受安装位置限制，可以安装在轨道中间或轨道外侧地沟内，为了安全和方便可以再地沟上方增加盖板，通过自动翻板装置，来实现地沟内的电源引入轨道平车上，操作系统为低压36V电源控制；平车上可以加装液压升降系统。

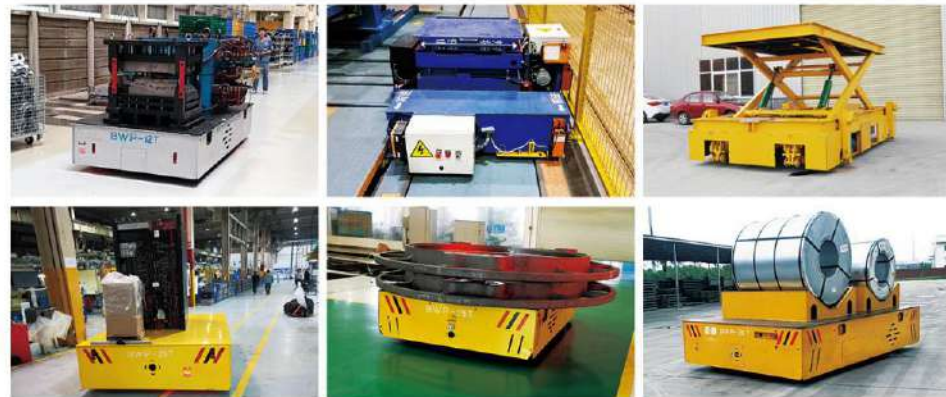
该系列平车适用于恶劣环境、高温环境场合；由于机构比较简单，对于轨道铺设要求不高，成本较低，是车间流水线生产线的的首选；该平车适用于运行距离不长（≤50m）、使用频率极高、整车高度较低、流水线作业等场合。

KPC series' rail transfer carts are powered by the sliding line. Is conducts AC 380V sliding wire directly into the AC electrical control system of the transfer cart to let it start, stop, go forward, backward and so on. The cart gets power from the slider of the safe sliding line which is moved by the cart' s running. The sliding line is limited by the installation position. It can be between the rails on the channel. Through the automatic device to conduce the power in the channel directly to the rail cart. The operation system is low voltage 36V power. The hydraulic lifting device can be installed on the flat carts. This series' flat carts are suitable to be used in the bad environment, for example, high-temperature condition.

Because of its simple structure, low cost and not so strict requirement on the construction of the rails, it is the first choice for the assembly lines of the workshop. This series transfer cart is suitable for the conditions of short running distance(≤50m), high using frequency, low cart' s and assembly line works.

BWP无轨道电动平车

Electric trackless transfer carts



BWP无轨平车(胶轮电动平车), 以蓄电池为能源蓄电池安装在电动平车的内部给直流牵引电机提供电力, 电气控制系统下达命令至直流电机带动电动平车运行各种动作, 通过遥控器发出启动、停止、前进、后退、左转、右转、调速等命令。轮胎选用聚氨酯实心胶轮, 地面无需铺设钢轨, 可在工厂内部平坦坚硬道路上行走, 具有良好机动性。

BWP trackless transfer cart(Rubber wheel electric transfer cart)is powered by battery, which is installed inside of the cart body. Electrical control system commend to the DC motor driven electric flat car to start, stop, go forward, back up; turns left and turns right, adjust speed through the remote controller. For this kind of transfer cart, it is no need to install the rail on the ground, its can directly work on flat hard road/ground; cement floor, which adopts solid PU rubber wheel with good mobility.

BWP 技术参数表

| 台面尺寸 Table Size (mm) | BWP-2T | BWP-5T | BWP-10T | BWP-15T | BWP-20T | BWP-25T | BWP-30T | BWP-40T | BWP-50T | BWP-60T | BWP-70T | BWP-80T | BWP-100 |
|-------------------------------|-------------|--------|---------|---------|---------|---------|---------|---------|---------|---------|---------|---------|---------|
| 额定载重量 Rated Load (t) | 2 | 5 | 10 | 15 | 20 | 25 | 30 | 40 | 50 | 60 | 70 | 80 | 100 |
| 台面尺寸 Table Size (mm) | 长Length (L) | 2000 | 2200 | 2300 | 2400 | 2400 | 3500 | 3500 | 5000 | 5500 | 5600 | 6500 | 6600 |
| | 宽Width (W) | 1500 | 2000 | 2000 | 2100 | 2200 | 2200 | 2200 | 2500 | 2600 | 2500 | 2600 | 3000 |
| | 高Height (H) | 450 | 500 | 550 | 600 | 600 | 700 | 700 | 800 | 800 | 850 | 900 | 1200 |
| 轮距 Wheel Base (mm) | 1080 | 1650 | 1650 | 1600 | 1650 | 1650 | 1650 | 2000 | 2000 | 1800 | 1850 | 1950 | 2000 |
| 轴距 Axle Base (mm) | 1380 | 1680 | 1700 | 1830 | 1850 | 2700 | 2700 | 3600 | 2850 | 2900 | 3500 | 3500 | 4000 |
| 车轮直径 Wheel Base (mm) | φ250 | φ300 | φ350 | φ400 | φ400 | φ450 | φ450 | φ500 | φ600 | φ600 | φ600 | φ600重 | φ600 |
| 车轮数量 WheelQuantity (个) | 4 | 4 | 4 | 4 | 4 | 4 | 4 | 4 | 4 | 4 | 6 | 6 | 8 |
| 离地间隙 Ground Clearance (mm) | 50 | 50 | 50 | 50 | 50 | 50 | 50 | 50 | 50 | 75 | 75 | 75 | 75 |
| 运行速度 Running Speed (m/min) | 0-25 | 0-25 | 0-25 | 0-20 | 0-20 | 0-20 | 0-20 | 0-20 | 0-20 | 0-20 | 0-20 | 0-20 | 0-18 |
| 电机功率 Motor Power (Kw) | 2*1.2 | 2*1.5 | 2*2.2 | 2*3.5 | 2*4.5 | 2*5.5 | 2*5.5 | 2*6.3 | 2*7.5 | 2*10 | 2*12 | 30 | 40 |
| 蓄电池容量 Batter Capacity (Ah) | 180 | 250 | 250 | 330 | 400 | 400 | 450 | 440 | 500 | 600 | 600 | 800 | 1000 |
| 蓄电池电压 Batter Voltage (V) | 24 | 48 | 48 | 48 | 48 | 48 | 48 | 72 | 72 | 72 | 72 | 72 | 72 |
| 最大轮压 Max Wheel Load (KN) | 14.4 | 25.8 | 42.6 | 64.5 | 77.7 | 94.5 | 110.4 | 142.8 | 174 | 221.4 | 152 | 185 | 190 |
| 参考重量 Reference Wight (t) | 2.3 | 3.6 | 4.2 | 5.5 | 5.9 | 6.5 | 6.8 | 7.6 | 8 | 10.8 | 12.8 | 14.6 | 26.8 |

说明: 1.载重量、台面尺寸、轨内侧距可以根据客户需求设计、制造; 2.可选配有接缝安全换出现、无缝安全滑触线; 3.可选配遇人自动停止、极限限位装置; 4.可选配随车随行操作、固定点操作、无线遥控控; 5.可选配进口电器; 6.可选配地沟自动救援工供电、地上供电灯; 7.可选配变频器无极调速; 8.可选配耐高温场合要求。

Notes: 1.Load capacity,table size and rail inner gauge can be customized. 2.Options: slide line with seam or seamless slid line; b automatic stop when detecting obstacle or person,limit switches(to limit travel);c.Operation way(hand held contrl pendant,remote radio control or operation platform with the cart;d.Electrical parts (imported or made in China);e.Elid line installation(in the trench on the ground, on the wall and on the ceiling);f.Variable speed device(VFD);g.Can be designed to meet special wording enbrionment such sas heightemperature.



LADLE 钢包车

TRANSFER CART



Ladle transfer cart is specially designed to transfer the high-temperature ladle. This kind of cart has strict requirements on safety and anti-high temperature, so the material, driving system and electrical parts of the cart should be specially designed. Both the start and stop of the cart should be slowly to prevent the molten steel and slag running out of the ladle. The heat insulating material is used in the cart to resist the high temperature. Usually two motor are prepared, when one is damaged by the ladle's high temperature, the other can be used to continue the work.

INTRODUCE

钢包车是用来转运特定的高温的一种电动平车，由于高温性和安全性较高，平车车体材料，传动系统的要求，电气控制的要求等都与普通轨道车有很大区别。为了防止溅出钢水或钢渣，电机启动和停止均缓慢调速，减少惯性。为了防止钢包高温辐射，车体内部设有隔热材料，为防止钢水温度影响损坏电机，采用双电机，一台损坏另一台能继续正常运行。



THE TURNING 转弯电动平车

RAIL TRANSFER CARTS

INTRODUCE

转弯电动平车为我公司专利产品可实现S型轨道，弧形轨道，直行+弧形轨道等多种转弯轨道，转弯半径小，转弯平稳灵活，与同类产品不同的是，我公司在设计上没有采取传统的复杂的转向机构和控制机构，而是通过优化驱动部结构，使成本大大降低，维护量同时大大减少。



The turning rail transfer carts are our company's patented products which can run on the rail 'S', arc-shaped, direct running with arc-shaped and so on. The turning radius is small and the turning is stable and flexible, Our superiority is that we don't use the traditional complex mechanical structure for the turning and controlling. The thing we do is to optimize structure of the driving parts. By this method, the cost can be greatly reduced, so does the maintenance work.



THE SPRAY BOOTH USING TRANSFER CART 烤漆房电动平车

INTRODUCE

烤漆房电动平车整车运行至烤漆房，然后两车分体，牵引车（电源车）开出烤漆房，避开高温对电机、电器的影响。



The working principle for the anti-high temperature electric rail transfer cart used in spray booth: when the whole cart runs into the spray booth, it is separated into two parts. The electric towing part runs out of the workshop which avoided the high temperature's influence to the motor, gear reducer and so on.

VACUUM FURNACE USING FERRY TRANSFER CART 真空炉摆渡电动平车

INTRODUCE

真空炉摆渡电动平车是由上中下三层车组成，第一层车（下层车）是为长距离运行平车；第二层（中层车）上铺设轨道，滚珠丝杠传动与真空炉轨道对接；第三层车（上层车）为齿轮齿条传动刻意与真空炉内的料车自动对接把料车拉出真空炉，为了第二层车轨道与真空炉轨道对接时平稳无冲击力，运行安全可靠故采用变频装置。

Vacuum furnace using ferry transfer cart is made of three carts. The cart on the surface of the trench is used to transport the above two carts for long distance. The second cart above the ground cart is equipped with rails and operated by the ball screw which is connected with the rail in the vacuum furnace. The third layer is gear and rack driven. It can automatically connect with the skip car within the vacuum furnace, then pull the skip car out of vacuum furnace. In order to make the connection safe, stable and without impact, frequency changing device is used.



THE ABRASIVE BLASTING TRANSFER CART 喷砂电动平车

INTRODUCE

喷砂车采用防尘设计避免砂尘对传统系统造成的影响。车架主要为型钢焊接而成，车体的空隙是为了方便在喷砂的过程中砂子直接从车体上了漏下来，方便喷砂。



The abrasive blasting transfer cart is designed into dust-proof to avoid the abrasive going into the motor and the driving system. The frame of the cart is made of the welded profile steel. The reticular holes on the platform of the cart can easily let the abrasive dropping on the ground to make the blasting work convenient.



TURNPLATE RAIL TRANSFER CART 转盘电动平车

INTRODUCE

转盘电动平车是一种能够在90°转弯的轨道上运行的电动平车。原理：电动平车运行至电动盘上，手动或自动旋转电动转盘，与垂直轨道对接，将电动平车沿垂直于轨道运行，实现90°转弯，适用于装备生产线的环形轨道、交叉轨道等场合。转盘系统具有运行平稳，轨道对接精度高、可实现全自动电器控制。

Turnplate rail transfer cart is a kind of transfer cart which can run on the 90° turning railway. Working principle: when the transfer cart runs on the turnplate, turn the turnplate automatically or with manpower to connect the rail on the turnplate with the 90° turning railway, and then the transfer cart will run on the 90° turning railway. This turnplate rail transfer cart is suitable to be used on the annular railway and crossing railway for the equipment's producing line. The turnplate system has the features of stable driving, high accuracy of rail connection and can be totally automatically operated.



MULTIFUNCTION MULTIFUNCTION TRAIN TRACTOR

公铁两用火车牵引车



INTRODUCE

目前市场上比较多的是叉车改造的。目前我们使用的是电池供电，可以满足在铁路上和公路上运行，这种新型的牵引机不需要专业司机，操作简单方便，单车牵引力大，可以满足大吨位的牵引。

Currently, most of multifunction train tractor is reformed by forklift in the market. At present our company adopts battery powered, which can meet running on the rail and on the road, this new tractor didn't require professional drivers, easy operate, strong traction force which can meet the large tonnage of traction.



DUMPING LADLE CAR

钢包倾倒电动平车

INTRODUCE

此平车可以将车上的钢包倾斜一定的角度，从而将钢包中的钢水倾倒出来，平车本身上安装有承重系统，可以准确秤出钢水的重量，保证安全生产，提高生产效率。

This kind of ladle car can be tilted the ladle on a certain angle, which will pour out the molten steel from the ladle, there is electronic weighing scale system on the car which can accurately scale the weight of molten steel to ensure safe production and improve production efficiency.

EXPLOSION-PROOF CLIMBING RAIL TRANSFER CART

防爆式轨道爬坡车



INTRODUCE

| | | | |
|------------------------|-------------|-------------|--------------------------------|
| 载重量(Load Capacity) | 15T | 特点(Feature) | 爬坡能力强 STRONG CLIMBING ABILITY |
| 台面尺寸(Table Size) | 2000*2000mm | | 不锈钢车轮 STAINLESS STEEL WHEEL |
| 动力供应(Power source) | 65m | | 防爆 ANTI-EXPLOSION |
| 运行长度(Running Distance) | 16100mm | | 应用在造船厂 APPLIED IN SHIPBUILDING |

HORIZONTAL MOVEMENT RAIL TRANSFER CART

横向移动轨道平车



INTRODUCE

一般适用于轨距跨度大，驱动适用双驱，适用我们公司定制的控制系統，保证电机的同步运行。

This kind of cart usually is applied in the wide rail gauge, we special design it with double driving system and customized control system to ensure the synchronous operation of the motor.



THE 'U' FRAME “U”型架电动平车

ELECTRIC TRANSFER CART

✓ INTRODUCE

“U”型架电动平车是针对搬运圆柱形工件在平车台面易滚动、散落而特别设计的一种固定装置，并且“U”型架可拆卸，以方便运输其他工件。

The electric transfer cart which has the 'U' frame is specially designed to transport the cylindrical workpiece which is easy to roll and drop. The frame can be removed so that cart be used to transport other kind materials.



THE HYDRAULIC 液压升降电动平车

TRANSFER CART

✓ INTRODUCE

液压升降电动平车在不需要外接电源外来动力的情况下运动自如不受距离的限制，操作方便，升降自如。两台车可以同时抬起工件，也可以单独抬起工件。液压升降电动平车升起的高度可以根据客户提供的尺寸设计。

The hydraulic transfer cart is powered by the battery and can run freely not limited by the distance. This cart has advantages of convenient operation and easy lifting. Besides, two carts of this type can lift the heavy equipment together, so does one cart. The lifting height can be designed according to the customer's requirement.



AUTOMATIC 自动化小车

GUIDE VEHICLE



INTRODUCE

自动化小车完全实现自动运行，实现车间无人化管理，可以实现和摆渡车及转盘等配套使用，实现多种工况的使用要求

Automatic guide vehicle can realize completely automatic operation to achieve unmanned management of the workshop, which also can working together with ferry car and turntable to achieve the different use of requirements.

OVER LONG TABLE 超长台面电动平车

TABLE SIZE ELECTRIC TRANSFER CART

超长台面电动平车

| | | | |
|-------------------|------------------|-----------------------|---|
| 型号 (Model) | KPC-10T | 速度 (Working speed) | 0-20m/min |
| 吨位 (Capacity) | 10T | 操作方式 (Control method) | 手柄+遥控 Pendant control+Remote control |
| 台面尺寸 (Table size) | 3200*16500*615mm | 供电方式 (Power source) | 滑触线 Sliding line |
| 轨距 (Rail gauge) | 16100mm | | |



ROLLER MOUNTED RAIL TRANSFER CAR

滚轮架小车

| | | | |
|-----------------------|---|--------------------------|-------------------------------------|
| 载重量 (Load Capacity) | 60T | 运行长度 (Running Distance) | 221.4KN |
| 台面尺寸 (Table Size) | 7000*1700*650mm | 运行速度 (Running Speed) | 电缆线卷筒/Cable Reel |
| 车轮直径 (Wheel Diameter) | 600mm | 供电方式 (Power Supply Mode) | 无线遥控&手柄 Remote&Hand Held Control |
| 特点 (Feature) | 焊接圆管、防腐圆钢等/Welding steel pipe an antiseptic round steel rod | | |
| | 台面上安装有滚轮架/There are roller stucture on the table surface | | |



电池熔盐电解专用电动平车

SPECIAL ELECTRIC TRANSFER CART FOR BATTERY MOLTEN SALT ELECTROLYSIS

INTRODUCE

此车一共两套，和熔盐电解炉配套使用，为我们公司专利产品。

The whole cart consists of two sets, matching with molten salt electrolysis furnace, which is our company's patented product.



ANNEALING FURNACE 退火炉专用电动平车 USING FLAT CART



INTRODUCE

此车为退火炉专用电动平车，共分为上下两层车，上车和下车的运行方向为垂直，下车可以和退火炉对接，并通过翻转活动导轨来对接退火炉内的轨道，通过上车的翻转臂来推拉炉内的设备，避免了高温对设备电器的影响，活动轨道和活动翻转臂都是自动对接，大大提高了生产率。

The cart is designed and manufactured base on the consider of annealing furnace application. The cart is made up of two carts: top car and bottom car, and these two car's running direction are vertical. The bottom car is used to connect the annealing furnace. The bottom car rails are connected with the rails in annealing furnace after they are overturned. Overturned arm mounted on top car is used to push and pull the equipment in furnace. This design avoid that the high temperature influences the electrical. Mobile rails and mobile overturning arm can automatically connect, which greatly increase the production efficiency.



ULTRA-LOW 超低台面车 TABLE TRANSFER CAR

INTRODUCE

| | |
|--------------------------|-------------------|
| 载重量 (Load Capacity) | 4T |
| 台面尺寸 (Table Size) | 1900*2150mm |
| 高度 (Table height) | 109mm |
| 运行长度 (Running Distance) | 5m |
| 运行速度 (Running Speed) | 0-20m/min |
| 供电方式 (Power Supply Mode) | 电缆线供电/Cable Power |



ROLLER MOUNTED 辊道式电动平车 ON FLAT CAR



INTRODUCE

| | |
|--------------------------|-----------------------------|
| 载重量 (Load Capacity) | 5T |
| 台面尺寸 (Table Size) | 6500*1750m |
| 高度 (Table height) | 550m |
| 运行长度 (Running Distance) | 50m |
| 运行速度 (Running Speed) | 0-20m/min |
| 供电方式 (Power Supply Mode) | 轨道供电/Low Voltage Rail Power |

此车平台上含有辊道，通过平车的运行来实现辊道的对接，此车电器为全自动化电器，通过激光距离传感器来检测停靠点，停靠精度±1mm，保证了辊道的精确对接，实现智能操作。

There are some rollers mounted on the car table, the flat car's running realizes the junction between roller on flat car and other rollers. The electrical is full automation. The laser distance sensor check the stopping point, the accuracy is ±1mm, which ensure roller accurately junction and realize the intelligent operation.

BIDIRECTIONAL RAILS MOVEMENT TRANSFER CART WITH SCISSOR LIFT

纵横移动剪叉升降车



INTRODUCE

剪叉升降通常用于升降高度较高的液压升降车，采用的是杠杆原理，通过液压缸的收放给剪叉架提供动力，由剪叉架的张合实现上层台面的升降，剪叉两端有固定装置和引导装置，使上台面能够平稳升降。

本平车由上中下三层车架，上层为升降台面，中层为纵向运行车架，下层为横向运行车架，轨道交叉处设有定位点，车架上接近开关感应到定位点后停止，通过直顶液压缸的升降完成换轨。

Scissor lift generally is used for transfer cart with high lifting height demand. It uses the principle of levers to provide power to the scissor frame through the retracting of the hydraulic cylinder. The lifting and lowering of the upper deck is realized by unfolding and folding of the scissor frame, There is a fixing device and a guiding device at the end, so that the upper table can be smoothly raised and lowered.

The transfer cart is composed of three frames on the upper, middle and lower sides. The upper layer is the lifting platform, the middle layer is the longitudinal running frame, and the lower layer is the horizontal running frame. There are positioning points at the intersections of the rails. The cart will stop after the proximity switch on the frame sense the positioning point, The rail is switched by the lifting of the jack upward of hydraulic cylinder.



HYDRAULIC LIFTING ROLLER TABLE TRANSFER CART

液压滚轮升降车



INTRODUCE

本平车对接滚轮输送链，在滚轮输送链将罐体输送到一定位置后停止输送，车体上的滚轮架向上旋转升起，滚轮架升到指定位置后继续输送罐体，待罐体一端输送至另一对接输送链上时停止输送，剪叉升降上升顶起罐体，然后操作平车行驶将罐体移到其他位置放置。

This kind of transfer cart is working together roller conveyor chain. Roller conveyor chain will stop after material transfer to a certain position, then the roller carrier on the cart body rises upward, roller carrier continue to conveying material up to the specified location, stop working when the material transfer to one end and docking with another conveying chain conveyor, hydraulic lifting system lift up the materials, then transfer cart moving material to other places.



SERIES TURNING CART

一主两被转弯车

INTRODUCE

该转向小车由一辆主动转向小车和两辆被动转向小车组成。这种运输小车具有以下功能：牵引功能，主动转向小车通过牵引钩带动两个被动转向小车，实现可操纵转移小车的运行。

遇人停止功能，通过光电开关的传感功能，可操纵的转移小车在运行过程中遇到人或物时自动停止。



The turning rail cart is composed of a powered turning cart and two non power turning carts. This kind of turning cart has the following functions: traction function, the powered turning cart drives two non power trolleys through the traction hook to realize the operation of the series turning rail cart.

The series turning rail cart can automatically stop when it detects the person or obstacle in running course by automatic stop function and photo sensor sensing function

ANTI-EXPLOSION ROTARY TABLE TRANSFER CAR FOR ZINC AND SAND BLASTING ROOM

防爆喷砂房车



INTRODUCE

这种移动车的工作台是中空的，工作台可以360度自由旋转。小车工作台配有自动喷砂、喷锌设备。旋转工作台以达到统一喷洒，由于转向车用于室内，整车采用防爆配置，确保员工安全。

The table of this type of transfer car is hollow, and the table can be rotated freely in 360 degrees. The table of the car is equipped with automatic sand blasting and zinc spraying equipment. The table is rotated to achieve the uniform spraying. Because the transfer car is used in indoor, the whole car adopts explosion-proof configuration to ensure the safety of staffs.

HYDRAULIC LIFTING 自动化子母摆渡升降车

FERRY TRANSFER CART



INTRODUCE

本平车由纵向、横向运行方向垂直的两台车组成，纵向运行小车在水平面下的地坑中运行，台面上铺设轨道与地面轨道对接，且平车台面上装有自动充电装置。横向小车带液压升降，在纵向小车上停止时，自动充电装置滑块对接实现自动充电功能，小车运行到工位会自动停止，把工件举升到工位工作台上。

This kind of transfer cart is composed of the longitudinal movement cart and horizontal movement cart. The longitudinal movement cart operates in the pit under the ground, and the track on the platform of longitudinal movement cart connect with the ground track. The longitudinal movement cart is equipped with an automatic charging device. The horizontal movement cart is equipped with hydraulic lifting, when the longitudinal movement cart stops, the sliders of the automatic charging device are connected to charge automatically. When the horizontal movement cart reaches the station, it will stop automatically and lift the workpiece to the station workbench.



AUTOMATIC TURNING CART

自动化转弯车



INTRODUCE

此平车车轮部分为四个单个小台车，小台车通过回转与台面连接，两个主动轮用连杆连接，两个被动轮用连杆连接，以此达到主动、被动同步转向。PLC通过接近开关感应地面定位点对电机下达启动、减速、停止指令。

This kind of cart wheel set is four single small trolley, small trolley through rotary connect with cart table, two driving wheel connected with connecting rod, two driven wheel connected with connecting rod too, in order to achieve synchronous steering. PLC through proximity switch to sense the ground location point to the motor issued start, slow down, stop instructions.



TRANSFER CART 自动化丝杠升降运输车

AUTOMATIC SCREW LIFTING

INTRODUCE

此平车可以实现转弯运行，台面上装有丝杠升降装置完成输送平台的升降，输送平台上有输送带将工件输送到指定工位，轨道轮两侧有固定导轮，防止平车运行过程中脱轨，电机采用的是伺服电机，定位精度更高，控制系统为PLC自动化控制，设定好程序后，小车可以按照程序在不同工位进行不同的输送工作。

The transfer car can rotate flexibly and freely. Table is equipped with the screw lifting device to make the transmission platform up and down. The conveyor belt on the transmission platform can transfer the work-pieces to the specified station. Fixed regulating wheels on both sides of the track wheel can prevent the transfer cart derail. The servo motor has a very high positioning accuracy. We adopt the PLC automation control system to let the cart auto complete different transportation tasks in different stations according to the program.



AGV MAGNETIC NAVIGATION

磁导航AGV搬运车

INTRODUCE

装备有电磁自动导航装置，电脑控制编程好后，它能够沿规定的导航磁钉路线自动行驶，以可充电的蓄电池为其动力来源。电磁轨道黏贴于地板上，沿预先设定的行驶路径打孔固定磁钉，小车两端对称安装有两个传感器，传感器上面装有16个感应点，通过感应点的变化来计算偏离路径的程度。自动控制系统根据这种偏差来控制车辆的转向，连续的动态闭环控制能够保证小车对设定路径的稳定自动跟踪。



Equipped with an electromagnetic automatic navigation device, after finished the computer controlled programming, AGV can auto follow the specified magnetic nail route, with the rechargeable battery as its power source. Magnetic nail is fixed on the floor along the pre-set driving path. Two sensors are installed symmetrically at both ends of the AGV, and 16 sensors points are installed on the sensors. The degree of deviation from the path is calculated by the change of the sensor points. The automatic control system can manage the AGV steering through this deviation, and the continuous dynamic closed-loop control system can ensure the AGV automatically and accurately follow the pre-set path.



STRAIGHT LINE MOVEMENT TRACKLESS TRANSFER CAR 导向直行无轨车

INTRODUCE

本车采用了与其他无轨车不同的主动轮——全向轮，主动轮并不在平车一端而是在中间位置，两端各有两个万向脚轮，车体纵向中心线上有导向轮导向槽，本车优点是转弯半径更小且行进方向可控，在地面固定导向轨，控制平车走向导向轨，通过引导轮、导向轮、导向槽与导向轨接触改变平车运行方向，实现无轨车直行。



This cart uses the omnidirectional wheels as driving wheel, which is different from other trackless cars driving wheels. The driving wheel is not at the end of the transfer car but in the middle position. There are two universal casters at each end, and there are guide wheels and guide groove on the longitudinal center line of the cart body. The advantage of this cart is that the turning radius is smaller and the direction of travel is controllable. The guide rail is fixed on the ground to control the transfer cart to go to the guide rail. The direction of the transfer car is changed by the contact of the guiding rail wheel, guide wheel, guide groove and guide rail to achieve running direction change to realize the trackless cart run straightly.

WATERPROOF TRANSFER CART 防水电动平车

INTRODUCE

防水搬运车是为室内环境设计的，转运车具有以下功能：防水功能，移送车四周装有防水边框，电机由防水罩保护。本电器配有防水挡板和防水按钮、开关。排水功能，在转运车的周围安装有排水槽，在转运车的两端设有排水管。

The waterproof transfer cart is designed for the indoor environment with the high-pressure water spray gun. The transfer cart has the following functions: Waterproof Function, The waterproof bezel is installed around the transfer cart, and the motor is protected by waterproof cover. The electric appliance is equipped with waterproof baffle and waterproof button and switch. Drainage Function, The drainage groove is installed around the transfer cart, and drainage pipe is quipped at both ends of the cart.



AUTOMATIC FINGER SYSTEM

子母摆渡车

INTRODUCE

这种平车多为一上一下两台运行方向垂直的平车组成，上车略小下车略大，下车台面铺设轨道运行在地沟内，台面轨道与地面轨道平齐，上车行驶到下车上，通过下车的运行实现平行轨道的换轨。

This kind of flat car is mostly composed of two transfer cart running in a vertical direction, upper cart is smaller and the lower cart table size is larger, upper cart running in the trench rails, the table rails and ground rails on one level, upper cart working on the lower cart table, then realize the parallel rail changes through the operation of the lower cart.



ADJUSTABLE ROLLER FRAME TRANSFER CARRIAGE 可调辊轮架平车

INTRODUCE

此平车由三部分组成分别为车架、丝杠调节架、辊轮，本车所有动力传输都是通过链传动实现，由于车身较窄轨距较大采用的是通轴车轮，轴上装有链轮，丝杠一端安装链轮，一侧辊轮上装有链轮，通过链条实现与减速机链轮的对接。

This transfer carriage is composed of three part: the carriage frame, lead screw regulating frame, rollers. The power transmission in this car is chain drive. Quill shaft is adopted as the narrow gauge of the carriage body is larger. The sprocket is installed on the shaft, the sprocket is installed on one end of the lead screw, and the sprocket is installed on one side of the roller. Through the chain to achieve the link with the reducer sprocket.

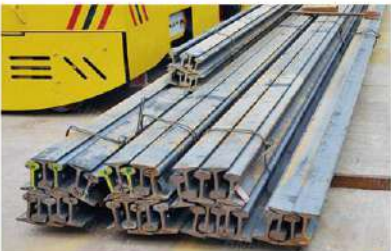




用心
Intention



优质
High quality



诚信
Sincerity



安全
Safety



创新
Innovate



新利德可提供一站式制作解决方案，质量好可接受第三方检验

NEW LEADER CAN PROVIDE ONE-STOP SOLUTION TO MAKE, GOOD QUALITY TO ACCEPT ANY THIRD PARTY INSPECTION